

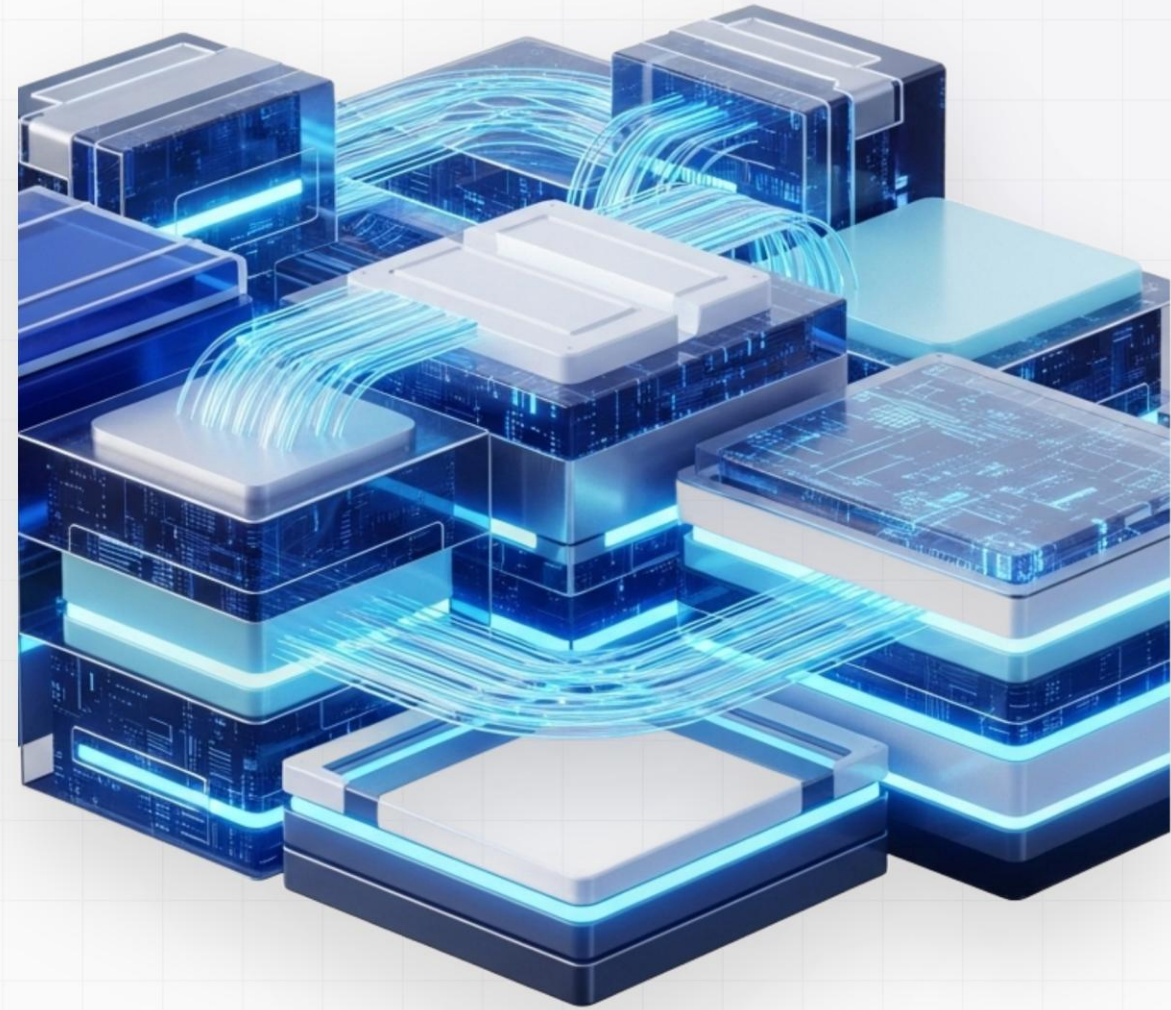
Cloud & Infrastructure

Cloud foundations should increase agility without creating sovereignty or control risk.

 SOVEREIGN

 HYBRID

 RESILIENT



Most cloud programs stall because the **foundation is weak.**



Vulnerable Landing Zones

Built without sufficient security and governance frameworks from day one, leaving enterprises exposed.



Manual Compliance

Regulatory compliance is managed manually through disjointed processes instead of being systematically enforced by design.



Misaligned Migration

Migration waves are executed blindly without direct ties to maximizing core business value or ROI.



Fragmented Hybridity

Hybrid environments become siloed, overly complex, and financially expensive to maintain over time.



Delayed Data Residency

Critical KSA regulatory requirements are discovered late, unraveling previous architecture decisions.



We build cloud platforms that are **secure**, **portable**, and ready for **enterprise scale**.



Secure Landing Zones & Data Sovereignty

Multi-account design, IAM, and network segmentation with strict data residency controls for in-Kingdom hosting and compliance reporting.



Policy-as-Code & Container Platforms

Automated governance via Terraform, OPA, and Sentinel, paired with robust Kubernetes scaling across EKS, AKS, GKE, and OpenShift.



Modernization & Hybrid Multi-Cloud

Tailored modernization paths (rehost, replatform, refactor) leveraging Azure Arc, AWS Outposts, and Anthos for seamless hybrid operations.

The goal is not only migration.

It is a cloud estate that can be **governed and operated.**

01

ASSESS



- ✓ Readiness evaluation
- ✓ Sovereign constraints
- ✓ Application portfolio
- ✓ Compliance exposure

02

DESIGN



- ✓ Secure landing zone
- ✓ Unified control model
- ✓ Workload placement
- ✓ Target architecture

03

MIGRATE



- ✓ Wave planning & exec
- ✓ Execution workflow
- ✓ Database migration
- ✓ Platform modernization

04

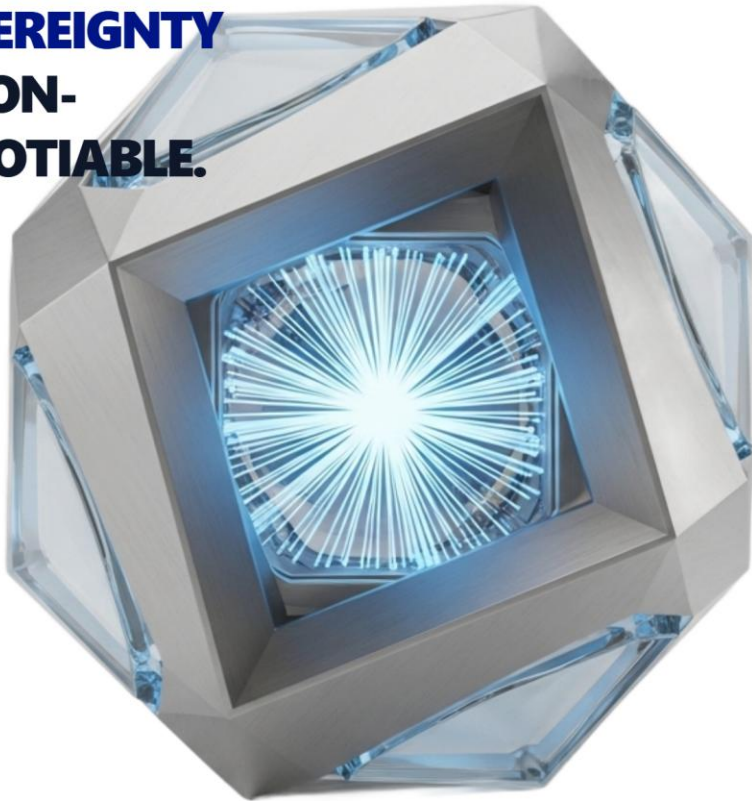
OPERATE



- ✓ Monitoring & alerting
- ✓ Automated runbooks
- ✓ FinOps & cost control
- ✓ Cont. optimization

Altaius is positioned for cloud decisions where...

**SOVEREIGNTY
IS NON-
NEGOTIABLE.**



Sovereignty-First Design

Built from the start with absolute control and compliance in mind, ensuring data residency and regulatory trust across Saudi Arabia.



Infrastructure as Code

Delivering total repeatability and transparent auditability, allowing infrastructure leaders to deploy with unmatched confidence.



Day 2 Operations Built-in

Continuous operational excellence is deeply integrated into the platform architecture, never bolted on as an afterthought.



FinOps Embedded from Day One

Proactive financial controls to meticulously manage spend, eliminate waste, and right-size hybrid cloud capacity dynamically.

— COMPLIANCE ARCHITECTURE

Built for

Cloud design in Saudi Arabia must stand up to rigorous regulatory scrutiny. **Altaius** positions cloud and infrastructure directly around:



NCA, SAMA, and PDPL requirements



In-Kingdom **data residency** planning



Encryption and key-management controls



Architecture checks informed by **SAMA, PDPL, GDPR, and the CLOUD Act**



Start with a cloud readiness assessment.

ASSESSMENT DELIVERABLES



Current-state architecture review



Security and sovereignty gap analysis



Recommended hosting patterns and migration waves



A practical path to a compliant cloud foundation



• NEXT STEP

Schedule a cloud assessment and define the **target-state architecture.**

Schedule Assessment

Connect with our architecture team



All assessments are conducted securely adhering to local data residency and regulatory compliance standards.